

ODM Quality Report

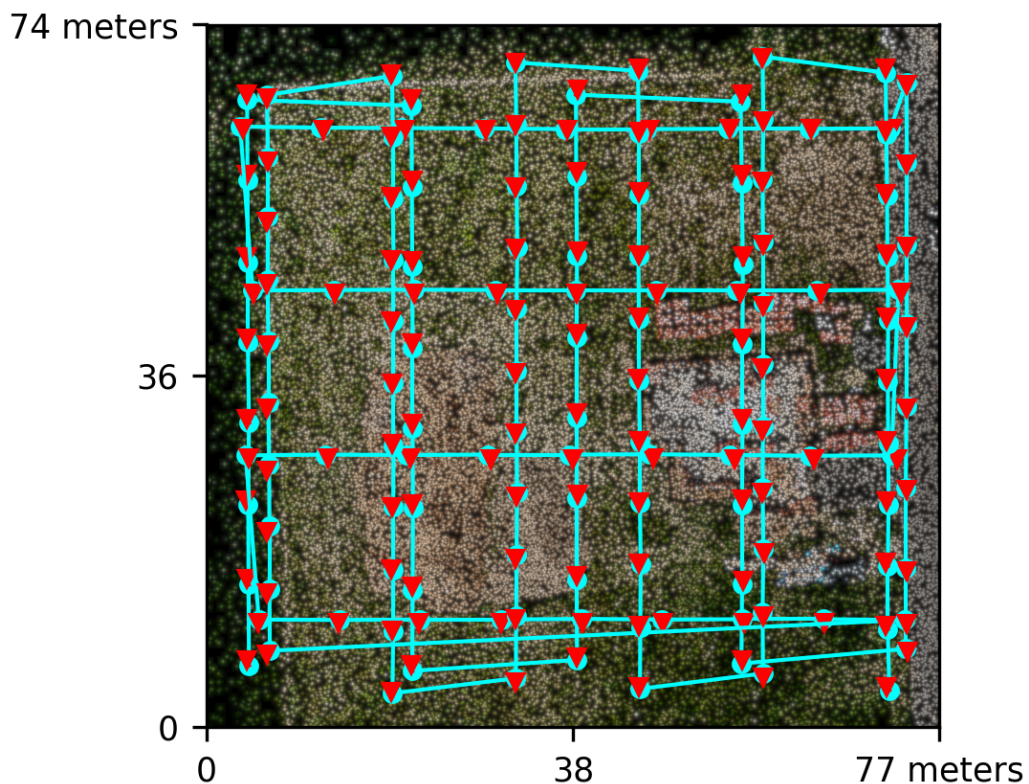
Processed with ODM version 3.5.6

Dataset Summary

Date	24/05/2026 at 22:25:00
Area Covered	0.004682 km ²
Processing Time	1.0h:27.0m:19.0s
Capture Start	23/05/2026 at 13:56:05
Capture End	23/05/2026 at 14:09:15

Processing Summary

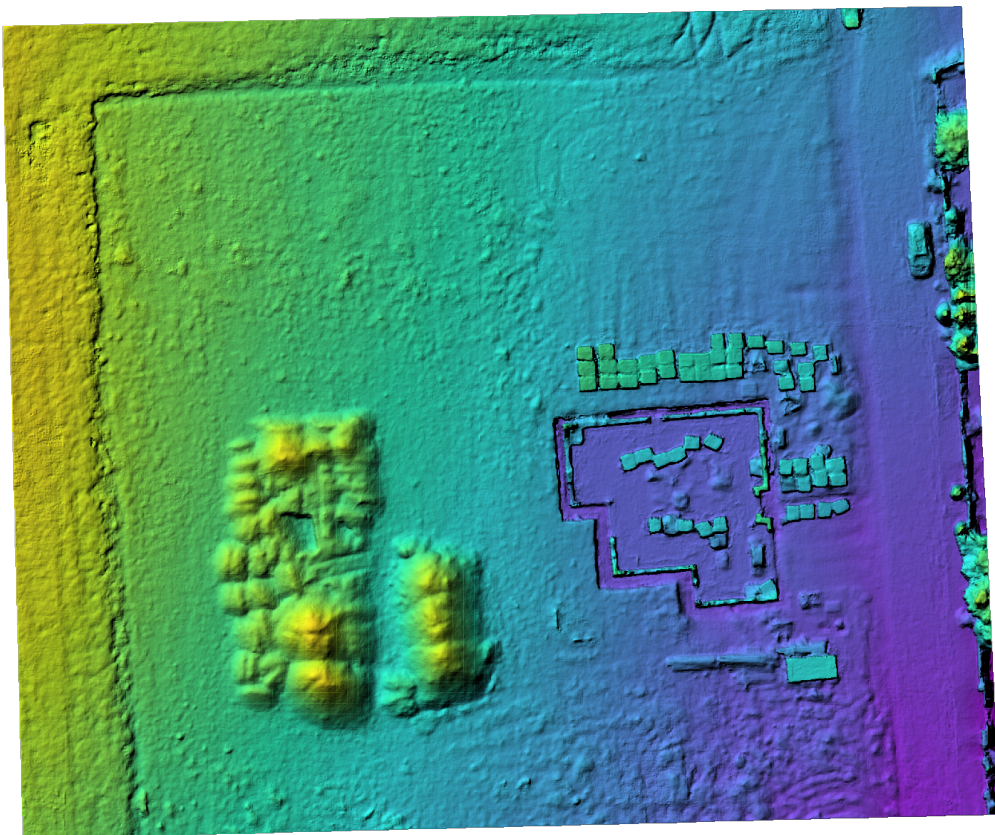
Reconstructed Images	141 over 141 shots (100.0%)
Reconstructed Points (Sparse)	141153 over 141410 points (99.8%)
Reconstructed Points (Dense)	17,419,254 points
Average Ground Sampling Distance (GSD)	1.2 cm
Detected Features	4,878 features
Reconstructed Features	4,556 features
Geographic Reference	GPS
GPS errors	0.56 meters



Previews



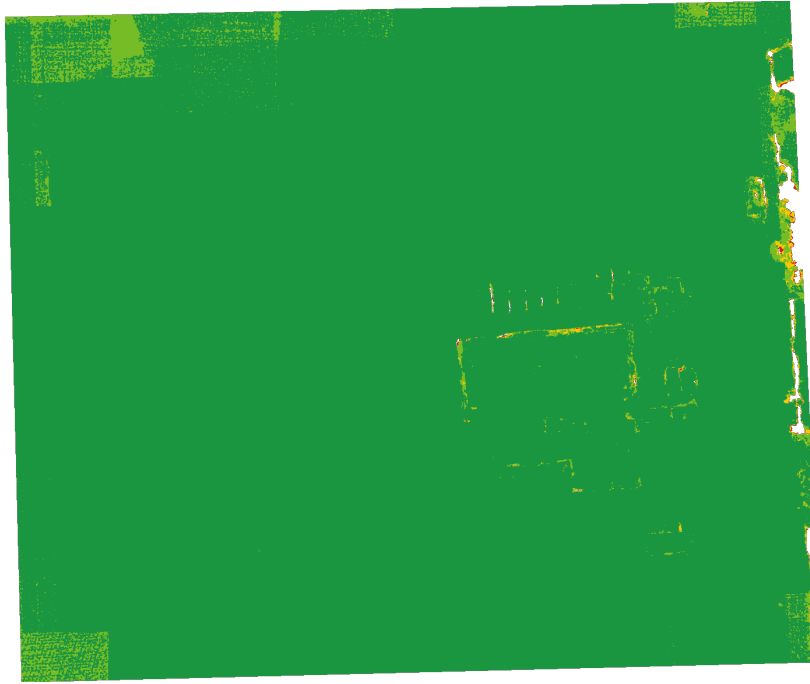
Orthophoto



Digital Surface Model



Survey Data



■ 2 ■ 3 ■ 4 ■ 5+

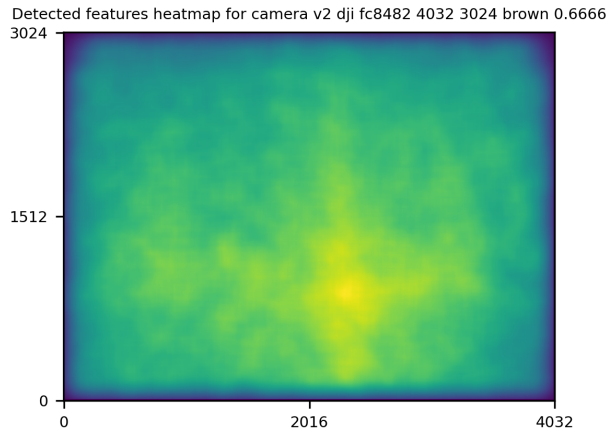
GPS/GCP/3D Errors Details

GPS	Mean	Standard Deviation	RMS Error
X Error (meters)	-0.007	0.175	0.175
Y Error (meters)	-0.014	0.376	0.376
Z Error (meters)	-0.002	0.384	0.384
Total			0.555

3D	Mean	Standard Deviation	RMS Error
X Error (meters)	0.036	0.055	0.066
Y Error (meters)	0.030	0.060	0.067
Z Error (meters)	0.058	0.094	0.110
Total			0.080

	Absolute	Relative
Horizontal Accuracy CE90 (meters)	0.599	0.125
Vertical Accuracy LE90 (meters)	0.473	0.140

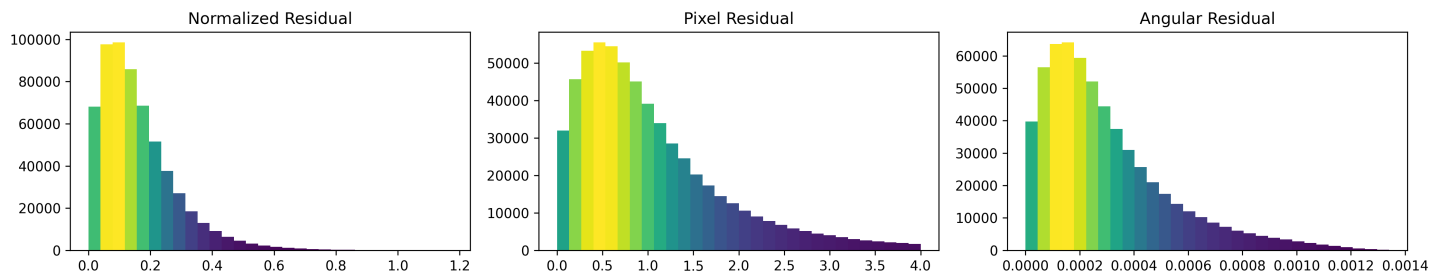
Features Details



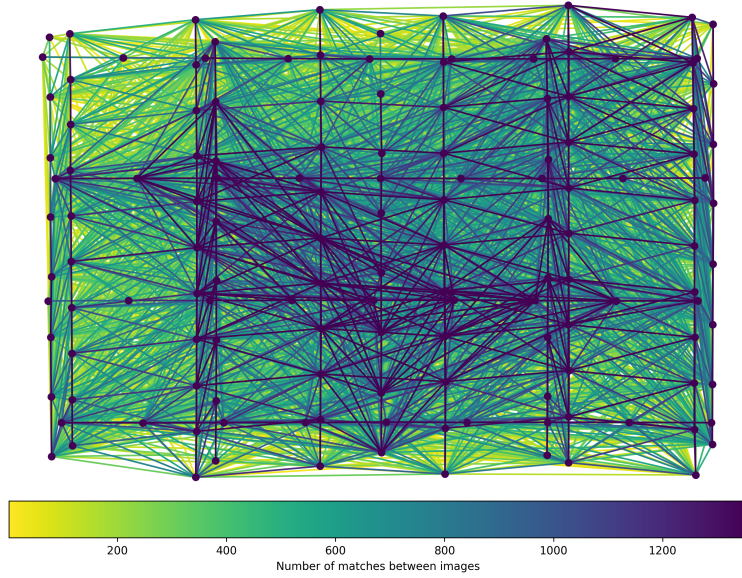
	Min.	Max.	Mean	Median
Detected	811	7177	4764	4878
Reconstructed	742	6687	4419	4556

Reconstruction Details

Average Reprojection Error (normalized / pixels / angular)	0.16 / 1.02 / 0.00030
Average Track Length	4.42 images
Average Track Length (> 2)	6.47 images



Tracks Details



Length	2	3	4	5	6	7	8	9	10
Count	64845	25261	13747	8093	5542	4240	3292	2673	2088

Camera Models Details

v2 dji fc8482 4032 3024 brown 0.6666

	k1	k2	k3	p1	p2	focal	aspect_ratio	cx	cy
Initial	0.0000	0.0000	0.0000	0.0000	0.0000	0.6667	1.0000	0.0000	0.0000
Optimized	0.0974	-0.1596	0.0995	-0.0001	0.0005	0.7359	1.0000	-0.0005	-0.0024

